

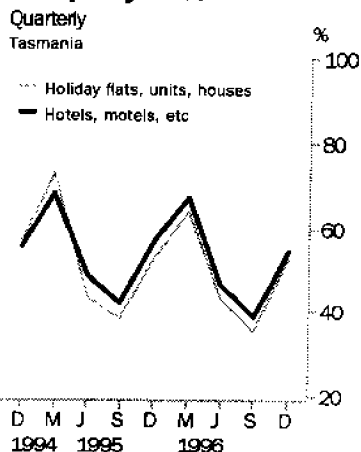
# TOURIST ACCOMMODATION

TASMANIA

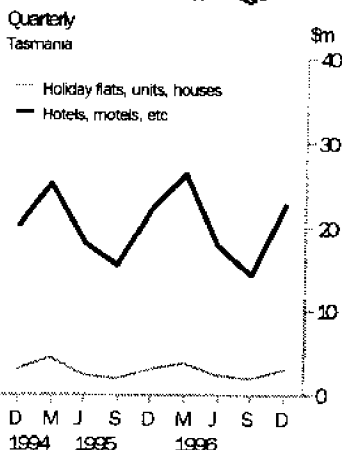
EMBARGO: 11:30AM (CANBERRA TIME) FRI 21 MAR 1997

## DECEMBER QTR KEY FIGURES

### Occupancy rates



### Accommodation takings



Dec 95      Dec 96      change

#### Hotels, Motels and Guest Houses (a)

Rooms available (No.)	5 503	5 604	1.8 %
Room occupancy rate (%)	57.0	54.8	-2.2 pts
Takings from accommodation (\$'000)	22 090	22 556	2.1 %

#### Holiday Flats, Units and Houses (a)

Units, etc. available (No.)	830	861	3.7 %
Unit occupancy rate (%)	52.8	52.9	0.1 pts
Takings from accommodation (\$'000)	2 958	2 990	1.1 %

#### Caravan Parks

Sites, cabins, etc. available (No.)	6 440	6 500	0.9 %
Site occupancy rate (%)	33.2	33.1	-0.1 pts
Takings from accommodation (\$'000)	1 923	1 983	3.1 %

#### Visitor Hostels (a)

Bed spaces available (No.)	1 719	2 120	23.3 %
Bed occupancy rate (%)	18.8	17.6	-1.2 pts
Takings from accommodation (\$'000)	361	409	13.3 %

(a) Coverage breaks in series occurred as from September quarter 1996. See page 2, 'Coverage update'.

## DECEMBER QTR KEY POINTS

### DEMAND DEPRESSED FOR HOTELS AND MOTELS

- Demand for accommodation in hotels, motels and guest houses decreased in terms of room nights occupied, in December quarter 1996 compared with December quarter 1995, while available capacity increased. Thus the room occupancy rate fell by 2.2 percentage points to 54.8%.
- In contrast, an increase in the number of holiday flats, units and houses available was matched by increased demand and the occupancy rate at 52.9% was almost unchanged. Similarly, for caravan parks, a slight increase in capacity available was matched by increased demand, with occupancy almost unchanged at 33.1%.

### TAKINGS FROM ACCOMMODATION

- Takings increased in aggregate, in December quarter 1996 compared with December quarter 1995, for all accommodation types. For hotels, motels and guest houses, average takings per room night occupied increased from \$76 to \$80, but for holiday flats and units, takings per unit night occupied fell from \$73 to \$71.

### INQUIRIES

- For further information about these and related statistics, contact Jennifer Cox on 07 3222 6148, or any ABS Office.

# NOTES

## FORTHCOMING ISSUES

*ISSUE (Quarter)*

*EXPECTED RELEASE DATE*

March 1997

13 June 1997

\*\*\*\*\*

## CHANGES IN THIS ISSUE

There are no changes in this issue.

\*\*\*\*\*

## COVERAGE UPDATE

As a result of improved coverage of in-scope establishments in Tasmania from September quarter 1996, there are minor breaks in series for hotels, motels and guest houses and for holiday flats, units and houses respectively and a major break in series for visitor hostels.

For hotels, motels and guest houses, improved coverage of in-scope establishments represented 1.1% of rooms available, 0.9% of bedspaces and 0.6% of both room nights occupied and takings from accommodation as published for September quarter 1996.

For holiday flats, units and houses, improved coverage accounted for 1.6% of flats and units available, 2.0% of bedspaces and 1.8% of both unit nights occupied and takings from accommodation as published for September quarter 1996.

For visitor hostels, improved coverage of in-scope establishments represented 20.4% of bedspaces available, 21.4% of guest nights and 21.1% of takings from accommodation as published for September quarter 1996.

\*\*\*\*\*

D. ROGERS  
Regional Director, Tasmania

TABLE 1 — SUMMARY OF HOTELS, MOTELS AND GUEST HOUSES WITH FACILITIES, TASMANIA (a)

Particulars	Unit	Quarter ended				Year ended			
		September 1995	December 1995	March 1996	June 1996	September 1996	December 1996	December 1995	December 1996
<b>LICENSED HOTELS WITH FACILITIES</b>									
Establishments	No.	92	92	92	92	92	91	..	..
Guest rooms	No.	3,566	3,566	3,580	3,582	3,510	3,532	..	..
Bed spaces	No.	9,946	9,911	9,924	10,015	9,817	9,860	..	..
Employment (persons)	No.	3,445	3,772	3,659	3,495	3,475	3,671	..	..
Room nights occupied	No.	140,180	186,265	211,766	149,879	129,619	175,395	693,758	666,659
Room occupancy rate	per cent	42.7	56.8	65.0	46.1	40.1	54.0	53.6	51.3
Guest nights	No.	228,065	309,095	371,418	242,777	202,198	290,642	1,165,811	1,107,035
Bed occupancy rate	per cent	24.9	33.9	41.1	26.7	22.4	32.0	32.2	30.6
Guest arrivals	No.	120,236	166,013	201,995	127,544	109,504	156,629	630,945	595,672
Average length of stay	days	1.9	1.9	1.8	1.9	1.8	1.9	1.8	1.9
Takings from accommodation	\$'000	11,026	15,252	17,496	12,129	9,784	14,941	55,895	54,350
<b>MOTELS AND GUEST HOUSES WITH FACILITIES</b>									
Establishments	No.	87	88	88	88	96	96	..	..
Guest rooms	No.	1,886	1,937	1,940	1,941	2,094	2,072	..	..
Bed spaces	No.	5,781	5,981	6,075	6,028	6,384	6,335	..	..
Employment (persons)	No.	777	874	884	762	787	949	..	..
Room nights occupied	No.	70,947	102,522	125,440	84,416	69,743	107,372	374,551	386,971
Room occupancy rate	per cent	40.9	57.5	71.1	47.8	36.2	56.3	54.4	52.5
Guest nights	No.	130,033	187,096	237,395	150,164	122,109	198,706	700,950	708,374
Bed occupancy rate	per cent	24.5	34.0	42.9	27.4	20.8	34.1	33.0	31.2
Guest arrivals	No.	74,128	106,934	139,100	92,343	73,074	123,164	405,389	427,681
Average length of stay	days	1.8	1.7	1.7	1.6	1.7	1.6	1.7	1.7
Takings from accommodation	\$'000	4,475	6,838	8,771	5,686	4,578	7,614	24,613	26,650
<b>TOTAL HOTELS, MOTELS AND GUEST HOUSES WITH FACILITIES</b>									
Establishments	No.	179	180	180	180	188	187	..	..
Guest rooms	No.	5,452	5,503	5,520	5,523	5,604	5,604	..	..
Bed spaces	No.	15,727	15,892	15,999	16,043	16,201	16,195	..	..
Employment (persons)	No.	4,222	4,646	4,543	4,257	4,262	4,620	..	..
Room nights occupied	No.	211,127	288,787	337,206	234,295	199,362	282,767	1,068,309	1,053,630
Room occupancy rate	per cent	42.1	57.0	67.1	46.7	38.7	54.8	53.9	51.8
Guest nights	No.	358,098	496,191	608,813	392,941	324,307	489,348	1,866,761	1,815,409
Bed occupancy rate	per cent	24.8	33.9	41.8	27.0	21.8	32.8	32.5	30.8
Guest arrivals	No.	194,364	272,947	341,095	219,887	182,578	279,793	1,036,334	1,023,353
Average length of stay	days	1.8	1.8	1.8	1.8	1.8	1.7	1.8	1.8
Takings from accommodation	\$'000	15,501	22,090	26,267	17,815	14,362	22,556	80,507	81,000

(a) Coverage breaks in series occurred as from September quarter 1996. See page 2. "Coverage update".

TABLE 2 — SUMMARY OF CARAVAN PARKS, TASMANIA

Particulars	Quarter ended						Year ended		
		September	December	March	June	September	December	December	December
	Unit	1995	1995	1996	1996	1996	1996	1995	1996
<b>SHORT-TERM CARAVAN PARKS</b>									
Establishments	No.	59	59	59	60	57	57	..	..
Capacity									
On-site vans	No.	248	259	244	235	235	229	..	..
Other powered sites	No.	2,895	2,907	2,980	2,941	2,839	2,872	..	..
Unpowered sites	No.	1,756	1,750	1,768	1,778	1,691	1,665	..	..
Cabins, etc.	No.	364	376	394	386	356	366	..	..
<i>Total capacity</i>	<i>No.</i>	<i>5,263</i>	<i>5,292</i>	<i>5,386</i>	<i>5,340</i>	<i>5,121</i>	<i>5,132</i>	..	..
Sites occupied by long-term guests	No.	216	221	211	227	202	189	..	..
Other sites permanently reserved	No.	984	1,050	1,061	1,053	1,072	1,074	..	..
Employment (persons)	No.	194	225	224	196	201	241	..	..
Site nights occupied	No.	134,839	166,716	213,884	151,778	140,470	163,816	669,769	669,948
Site occupancy rate	per cent	28.1	34.2	43.6	31.2	29.8	34.7	33.3	34.9
Takings from accommodation	\$'000	841	1,544	2,606	1,229	878	1,499	6,093	6,212
<b>LONG-TERM CARAVAN PARKS</b>									
Establishments	No.	13	13	13	13	16	16	..	..
Capacity									
On-site vans	No.	137	121	122	132	135	136	..	..
Other powered sites	No.	586	578	573	565	662	661	..	..
Unpowered sites	No.	340	360	351	350	438	437	..	..
Cabins, etc.	No.	91	89	92	92	135	134	..	..
<i>Total capacity</i>	<i>No.</i>	<i>1,154</i>	<i>1,148</i>	<i>1,138</i>	<i>1,139</i>	<i>1,370</i>	<i>1,368</i>	..	..
Sites occupied by long-term guests	No.	208	198	211	223	240	228	..	..
Other sites permanently reserved	No.	25	41	36	33	35	33	..	..
Employment (persons)	No.	44	46	49	48	63	64	..	..
Site nights occupied	No.	27,243	29,884	35,972	28,260	28,722	33,987	113,091	126,941
Site occupancy rate	per cent	25.7	28.3	34.7	27.3	22.8	27.0	29.4	27.6
Takings from accommodation	\$'000	270	378	520	346	331	484	1,350	1,681
<b>TOTAL CARAVAN PARKS</b>									
Establishments	No.	72	72	72	73	73	73	..	..
Capacity									
On-site vans	No.	385	380	366	367	370	365	..	..
Other powered sites	No.	3,481	3,485	3,553	3,506	3,501	3,533	..	..
Unpowered sites	No.	2,096	2,110	2,119	2,128	2,129	2,102	..	..
Cabins, etc.	No.	455	465	486	478	491	500	..	..
<i>Total capacity</i>	<i>No.</i>	<i>6,417</i>	<i>6,440</i>	<i>6,524</i>	<i>6,479</i>	<i>6,491</i>	<i>6,500</i>	..	..
Sites occupied by long-term guests	No.	424	419	422	450	442	417	..	..
Other sites permanently reserved	No.	1,009	1,091	1,097	1,086	1,107	1,107	..	..
Employment (persons)	No.	238	271	273	244	264	305	..	..
Site nights occupied	No.	162,082	196,600	249,856	180,038	169,192	197,803	782,860	796,889
Site occupancy rate	per cent	27.7	33.2	42.1	30.5	28.3	33.1	32.7	33.5
Takings from accommodation	\$'000	1,111	1,923	3,126	1,575	1,209	1,983	7,443	7,893

TABLE 3 — SUMMARY OF HOLIDAY FLATS, UNITS AND HOUSES, TASMANIA (a)

Particulars	Unit	Quarter ended				Year ended			
		September 1995	December 1995	March 1996	June 1996	September 1996	December 1996	December 1995	December 1996
Letting entities	No.	54	54	54	55	57	57	..	..
Flats, units and houses									
Single bedroom	No.	226	235	235	241	240	240	..	..
Multiple bedroom	No.	595	595	595	605	618	621	..	..
<i>Total flats, units and houses</i>	<i>No.</i>	<i>821</i>	<i>830</i>	<i>830</i>	<i>846</i>	<i>858</i>	<i>861</i>	<i>..</i>	<i>..</i>
Bed spaces	No.	3,665	3,660	3,657	3,696	3,800	3,810	..	..
Employment (persons)	No.	343	367	356	307	322	341	..	..
Unit nights occupied	No.	28,778	40,351	48,512	33,371	28,000	41,935	158,778	151,818
Unit occupancy rate	per cent	38.3	52.8	64.2	43.3	35.5	52.9	52.0	48.9
Unit lettings	No.	13,236	19,731	23,801	16,116	13,426	20,950	75,016	74,293
Average length of stay	days	2.2	2.0	2.0	2.1	2.1	2.0	2.1	2.0
Takings from accommodation	\$'000	1,933	2,958	3,835	2,374	1,922	2,990	11,626	11,121

(a) Coverage breaks in series occurred as from September quarter 1996. See page 2, "Coverage update".

TABLE 4 — SUMMARY OF VISITOR HOSTELS, TASMANIA (a)

Particulars	Unit	Quarter ended				Year ended			
		September 1995	December 1995	March 1996	June 1996	September 1996	December 1996	December 1995	December 1996
Establishments	No.	41	41	41	40	46	47	..	..
Bed spaces	No.	1,770	1,719	1,727	1,684	2,096	2,120	..	..
Employment (persons)	No.	95	110	112	105	130	143	..	..
Guest nights	No.	12,804	29,682	48,155	21,872	17,803	33,812	109,349	121,642
Bed occupancy rate	per cent	8.1	18.8	30.6	14.3	9.2	17.6	17.2	17.5
Guest arrivals	No.	8,046	19,053	32,208	13,386	11,743	22,296	68,160	79,633
Average length of stay	days	1.6	1.6	1.5	1.6	1.5	1.5	1.6	1.5
Takings from accommodation	\$'000	158	361	580	261	207	409	1,292	1,457

(a) Coverage breaks in series occurred as from September quarter 1996. See page 2, "Coverage update".

TABLE 5—HOTELS, MOTELS AND GUEST HOUSES WITH FACILITIES BY STAR GRADING, TASMANIA (a)

Particulars	Licensed hotels with facilities	Motels and guest houses	Star grading			Total
			1, 2 and Ungraded	3	4 and 5	
<b>ESTABLISHMENTS, CAPACITY AND EMPLOYMENT</b>						
<i>December quarter 1995—</i>						
Establishments	92	88	65	85	30	180
Guest rooms	3,566	1,937	1,222	2,649	1,632	5,503
Bed spaces	9,911	5,981	3,390	7,851	4,651	15,892
Employment (persons)	3,772	874	839	1,537	2,270	4,646
<i>December quarter 1996—</i>						
Establishments	91	96	74	74	39	187
Guest rooms	3,532	2,072	1,456	2,409	1,739	5,604
Bed spaces	9,860	6,335	4,096	7,205	4,894	16,195
Employment (persons)	3,671	949	1,331	1,361	1,928	4,620
<b>ROOM NIGHTS OCCUPIED</b>						
<i>December quarter 1995</i>	186,265	102,522	45,332	136,815	106,640	288,787
<i>1996—</i>						
October	59,549	36,804	18,754	40,472	37,127	96,353
November	62,249	38,700	19,827	43,227	37,895	100,949
December	53,597	31,868	18,154	33,918	33,393	85,465
<i>December quarter 1996</i>	175,395	107,372	56,735	117,617	108,415	282,767
<b>ROOM OCCUPANCY RATES (per cent)</b>						
<i>December quarter 1995</i>	56.8	57.5	40.3	56.1	71.0	57.0
<i>1996—</i>						
October	54.4	57.3	41.5	54.2	68.9	55.5
November	58.7	62.3	45.4	59.8	72.6	60.0
December	49.0	49.6	40.2	45.4	61.9	49.2
<i>December quarter 1996</i>	54.0	56.3	42.4	53.1	67.8	54.8
<b>GUEST NIGHTS</b>						
<i>December quarter 1995</i>	309,095	187,096	78,380	243,628	174,183	496,191
<i>1996—</i>						
October	96,223	67,087	33,566	72,907	56,837	163,310
November	100,841	70,691	34,575	77,011	59,946	171,532
December	93,578	60,928	33,739	64,504	56,263	154,506
<i>December quarter 1996</i>	290,642	198,706	101,880	214,422	173,046	489,348
<b>BED OCCUPANCY RATES (per cent)</b>						
<i>December quarter 1995</i>	33.9	34.0	25.1	33.7	40.7	33.9
<i>1996—</i>						
October	31.5	34.2	26.4	32.6	37.5	32.5
November	34.1	37.2	28.1	35.6	40.8	35.3
December	30.6	31.0	26.6	28.9	37.1	30.8
<i>December quarter 1996</i>	32.0	34.1	27.0	32.3	38.4	32.8
<b>GUEST ARRIVALS</b>						
<i>December quarter 1995</i>	166,013	106,934	46,661	143,819	82,467	272,947
<i>1996—</i>						
October	51,840	42,079	19,361	44,746	29,812	93,919
November	54,619	43,576	20,370	47,800	30,025	98,195
December	50,170	37,509	20,354	40,373	26,952	87,679
<i>December quarter 1996</i>	156,629	123,164	60,085	132,919	86,789	279,793
<b>AVERAGE LENGTH OF STAY (days)</b>						
<i>December quarter 1995</i>	1.9	1.7	1.7	1.7	2.1	1.8
<i>December quarter 1996</i>	1.9	1.6	1.7	1.6	2.0	1.7
<b>TAKINGS FROM ACCOMMODATION (\$'000)</b>						
<i>December quarter 1995</i>	15,252	6,838	2,766	8,748	10,576	22,090
<i>1996—</i>						
October	5,022	2,555	1,331	2,573	3,674	7,577
November	5,221	2,695	1,396	2,817	3,702	7,916
December	4,699	2,364	1,370	2,360	3,333	7,063
<i>December quarter 1996</i>	14,941	7,614	4,096	7,750	10,710	22,556

(a) Coverage breaks in series occurred as from September quarter 1996. See page 2, "Coverage update".

TABLE 6—HOTELS, MOTELS AND GUEST HOUSES WITH FACILITIES BY ESTABLISHMENT SIZE, TASMANIA (a)

Particulars	Establishment size (No. of rooms)						Total
	5-9	10-15	16-25	26-50	51-100	101+	
<b>ESTABLISHMENTS, CAPACITY AND EMPLOYMENT</b>							
<i>December quarter 1995—</i>							
Establishments	42	30	30	50	20	8	180
Guest rooms	298	342	611	1,707	1,296	1,249	5,503
Bed spaces	754	939	1,722	5,053	4,016	3,408	15,892
Employment (persons)	236	348	405	943	821	1,893	4,646
<i>December quarter 1996 -</i>							
Establishments	48	32	28	50	21	8	187
Guest rooms	333	373	584	1,716	1,349	1,249	5,604
Bed spaces	823	1,063	1,623	5,086	4,192	3,408	16,195
Employment (persons)	297	354	423	906	857	1,783	4,620
<b>ROOM NIGHTS OCCUPIED</b>							
<i>December quarter 1995</i>	12,278	15,239	26,589	85,386	65,440	83,855	288,787
<i>1996—</i>							
October	5,125	5,079	9,001	28,047	21,202	27,899	96,353
November	5,165	5,473	9,956	28,467	23,271	28,617	100,949
December	4,912	5,102	8,242	22,708	19,755	24,746	85,465
<i>December quarter 1996</i>	15,202	15,654	27,199	79,222	64,228	81,262	282,767
<b>ROOM OCCUPANCY RATES (per cent)</b>							
<i>December quarter 1995</i>	44.8	48.4	47.3	54.4	54.9	73.0	57.0
<i>1996—</i>							
October	49.6	43.9	49.7	52.7	50.7	72.1	55.5
November	51.7	48.9	56.8	55.3	57.5	76.4	60.0
December	47.6	44.1	45.5	42.7	47.2	63.9	49.2
<i>December quarter 1996</i>	49.6	45.6	50.6	50.2	51.8	70.7	54.8
<b>GUEST NIGHTS</b>							
<i>December quarter 1995</i>	20,713	25,790	46,846	152,410	117,322	133,110	496,191
<i>1996—</i>							
October	7,972	8,237	15,988	49,814	38,701	42,598	163,310
November	8,341	9,240	17,367	50,647	41,639	44,298	171,532
December	8,430	8,778	14,797	42,706	38,878	40,917	154,506
<i>December quarter 1996</i>	24,743	26,255	48,152	143,167	119,218	127,813	489,348
<b>BED OCCUPANCY RATES (per cent)</b>							
<i>December quarter 1995</i>	29.9	29.9	29.6	32.8	31.8	42.5	33.9
<i>1996—</i>							
October	31.2	25.0	31.8	31.6	29.8	40.3	32.5
November	33.8	29.0	35.7	33.2	33.1	43.3	35.3
December	33.0	26.6	29.4	27.1	29.9	38.7	30.8
<i>December quarter 1996</i>	32.7	26.8	32.2	30.6	30.9	40.8	32.8
<b>GUEST ARRIVALS</b>							
<i>December quarter 1995</i>	12,849	16,007	28,263	92,688	68,901	54,239	272,947
<i>1996—</i>							
October	5,303	5,075	10,326	30,329	25,442	17,444	93,919
November	5,449	5,798	10,996	32,025	25,635	18,292	98,195
December	5,265	5,458	9,245	26,507	24,203	17,001	87,679
<i>December quarter 1996</i>	16,017	16,331	30,567	88,861	75,280	52,737	279,793
<b>AVERAGE LENGTH OF STAY (days)</b>							
<i>December quarter 1995</i>	1.6	1.6	1.7	1.6	1.7	2.5	1.8
<i>December quarter 1996</i>	1.5	1.6	1.6	1.6	1.6	2.4	1.7
<b>TAKINGS FROM ACCOMMODATION (\$'000)</b>							
<i>December quarter 1995</i>	726	824	1,563	5,338	5,454	8,184	22,090
<i>1996—</i>							
October	295	269	512	1,815	1,913	2,773	7,577
November	315	309	582	1,816	2,102	2,791	7,916
December	307	307	514	1,541	1,895	2,498	7,063
<i>December quarter 1996</i>	918	885	1,608	5,172	5,910	8,062	22,556

(a) Coverage breaks in series occurred as from September quarter 1996. See page 2, "Coverage update".

TABLE 7 — HOTELS, MOTELS AND GUEST HOUSES WITH FACILITIES BY STATISTICAL DIVISION,  
TASMANIA (a)

Particulars	Greater Hobart (SD)			Southern (SD)			Northern (SD)		
	Licensed hotels with facilities	Motels and guest houses	Total	Licensed hotels with facilities	Motels and guest houses	Total	Licensed hotels with facilities	Motels and guest houses	Total
<b>ESTABLISHMENTS, CAPACITY AND EMPLOYMENT</b>									
<i>December quarter 1995—</i>									
Establishments	23	27	50	14	9	23	32	24	56
Guest rooms	1,223	662	1,885	477	134	611	1,135	468	1,603
Bed spaces	3,152	1,999	5,151	1,437	503	1,940	3,321	1,506	4,827
Employment (persons)	1,648	303	1,951	268	101	369	1,312	143	1,455
<i>December quarter 1996—</i>									
Establishments	24	30	54	13	11	24	32	26	58
Guest rooms	1,232	680	1,912	405	203	608	1,154	482	1,636
Bed spaces	3,171	2,079	5,250	1,278	664	1,942	3,372	1,555	4,927
Employment (persons)	1,646	330	1,976	249	105	354	1,234	156	1,390
<b>ROOM NIGHTS OCCUPIED</b>									
<i>December quarter 1995</i>	78,952	39,765	118,717	17,250	6,289	23,539	58,272	24,499	82,771
<i>1996—</i>									
October	26,131	14,882	41,013	4,982	2,566	7,548	19,605	8,485	28,090
November	27,028	14,910	41,938	5,442	2,783	8,225	20,288	8,378	28,666
December	23,045	11,752	34,797	4,922	2,941	7,863	17,576	7,117	24,693
<i>December quarter 1996</i>	76,204	41,544	117,748	15,346	8,290	23,636	57,469	23,980	81,449
<b>ROOM OCCUPANCY RATES (per cent)</b>									
<i>December quarter 1995</i>	70.2	65.3	68.5	39.3	51.0	41.9	55.8	56.9	56.1
<i>1996—</i>									
October	68.4	70.6	69.2	39.7	40.8	40.0	54.8	56.8	55.4
November	73.1	73.1	73.1	44.8	45.7	45.1	58.6	57.9	58.4
December	60.3	55.7	58.7	39.2	46.7	41.7	49.1	47.6	48.7
<i>December quarter 1996</i>	67.2	66.4	66.9	41.2	44.4	42.3	54.1	54.1	54.1
<b>GUEST NIGHTS</b>									
<i>December quarter 1995</i>	126,595	73,735	200,330	34,951	13,841	48,792	96,181	43,892	140,073
<i>1996—</i>									
October	40,023	26,920	66,943	10,011	5,343	15,354	32,171	15,624	47,795
November	42,278	27,101	69,379	10,789	5,800	16,589	32,969	15,290	48,259
December	38,446	22,772	61,218	10,369	6,509	16,878	30,544	13,274	43,818
<i>December quarter 1996</i>	120,747	76,793	197,540	31,169	17,652	48,821	95,684	44,188	139,872
<b>BED OCCUPANCY RATES (per cent)</b>									
<i>December quarter 1995</i>	43.7	40.1	42.3	26.4	29.9	27.3	31.5	31.7	31.5
<i>1996—</i>									
October	40.7	41.8	41.1	25.3	26.0	25.5	30.8	32.4	31.3
November	44.4	43.5	44.1	28.1	29.1	28.5	32.6	32.8	32.6
December	39.1	35.3	37.6	26.2	31.6	28.0	29.2	27.5	28.7
<i>December quarter 1996</i>	41.4	40.1	40.9	26.5	28.9	27.3	30.8	30.9	30.9
<b>GUEST ARRIVALS</b>									
<i>December quarter 1995</i>	51,703	36,409	88,112	27,923	6,971	34,894	51,881	25,550	77,431
<i>1996—</i>									
October	16,638	15,167	31,805	8,297	3,603	11,900	16,893	9,931	26,824
November	17,744	14,526	32,270	8,753	3,984	12,737	17,707	9,880	27,587
December	16,099	12,321	28,420	8,077	3,813	11,890	16,150	8,543	24,693
<i>December quarter 1996</i>	50,481	42,014	92,495	25,127	11,400	36,527	50,750	28,354	79,104
<b>AVERAGE LENGTH OF STAY (days)</b>									
<i>December quarter 1995</i>	2.4	2.0	2.3	1.3	2.0	1.4	1.9	1.7	1.8
<i>December quarter 1996</i>	2.4	1.8	2.1	1.2	1.5	1.3	1.9	1.6	1.8
<b>TAKINGS FROM ACCOMMODATION (\$'000)</b>									
<i>December quarter 1995</i>	7,380	2,500	9,880	1,066	671	1,737	4,379	1,507	5,887
<i>1996—</i>									
October	2,509	961	3,470	296	277	573	1,503	529	2,031
November	2,548	958	3,506	332	303	635	1,588	532	2,120
December	2,236	804	3,041	331	340	672	1,432	461	1,893
<i>December quarter 1996</i>	7,293	2,724	10,016	959	920	1,880	4,523	1,522	6,045



TABLE 7 — HOTELS, MOTELS AND GUEST HOUSES WITH FACILITIES BY STATISTICAL DIVISION,  
TASMANIA (a)—continued

Particulars	Mersey-Lyell (SD)			Total Tasmania			East Coast (b)
	Licensed hotels with facilities	Motels and guest houses	Total	Licensed hotels with facilities	Motels and guest houses	Total	Total
ESTABLISHMENTS, CAPACITY AND EMPLOYMENT							
<i>December quarter 1995</i>							
Establishments	23	28	51	92	88	180	14
Guest rooms	731	673	1,404	3,566	1,937	5,503	485
Bed spaces	2,001	1,973	3,974	9,911	5,981	15,892	1,586
Employment (persons)	544	327	871	3,772	874	4,646	318
<i>December quarter 1996</i>							
Establishments	22	29	51	91	96	187	16
Guest rooms	741	707	1,448	3,532	2,072	5,604	509
Bed spaces	2,039	2,037	4,076	9,860	6,335	16,195	1,674
Employment (persons)	542	358	900	3,671	949	4,620	311
ROOM NIGHTS OCCUPIED							
<i>December quarter 1995</i>							
	31,791	31,969	63,760	186,265	102,522	288,787	18,515
<i>1996—</i>							
October	8,831	10,871	19,702	59,549	36,804	96,353	6,446
November	9,491	12,629	22,120	62,240	38,700	100,949	6,821
December	8,054	10,058	18,112	53,597	31,868	85,465	6,471
<i>December quarter 1996</i>							
	26,376	33,558	59,934	175,395	107,372	282,767	19,738
ROOM OCCUPANCY RATES (per cent)							
<i>December quarter 1995</i>							
	47.3	51.6	49.4	56.8	57.5	57.0	41.5
<i>1996—</i>							
October	38.4	49.6	43.9	54.4	57.3	55.5	40.9
November	42.7	59.5	50.9	58.7	62.3	60.0	44.7
December	35.1	45.9	40.3	49.0	49.6	49.2	41.0
<i>December quarter 1996</i>							
	38.7	51.6	45.0	54.0	56.3	54.8	42.1
GUEST NIGHTS							
<i>December quarter 1995</i>							
	51,368	55,628	106,996	309,095	187,096	496,191	37,043
<i>1996—</i>							
October	14,018	19,200	33,218	96,223	67,087	163,310	13,123
November	14,805	22,500	37,305	100,841	70,691	171,532	13,568
December	14,219	18,373	32,592	93,578	60,928	154,506	13,961
<i>December quarter 1996</i>							
	43,042	60,073	103,115	290,642	198,706	489,348	40,652
BED OCCUPANCY RATES (per cent)							
<i>December quarter 1995</i>							
	27.9	30.6	29.3	33.9	34.0	33.9	25.4
<i>1996—</i>							
October	22.2	30.4	26.3	31.5	34.2	32.5	25.3
November	24.2	36.8	30.5	34.1	37.2	35.3	27.0
December	22.5	29.1	25.8	30.6	31.0	30.8	26.9
<i>December quarter 1996</i>							
	22.9	32.1	27.5	32.0	34.1	32.8	26.4
GUEST ARRIVALS							
<i>December quarter 1995</i>							
	34,506	38,004	72,510	166,013	106,934	272,947	24,697
<i>1996—</i>							
October	10,012	13,378	23,390	51,840	42,079	93,919	9,733
November	10,415	15,186	25,601	54,619	43,576	98,195	10,164
December	9,844	12,832	22,676	50,170	37,509	87,679	9,649
<i>December quarter 1996</i>							
	30,271	41,396	71,667	156,629	123,164	279,793	29,546
AVERAGE LENGTH OF STAY (days)							
<i>December quarter 1995</i>							
	1.5	1.5	1.5	1.9	1.7	1.8	1.5
<i>December quarter 1996</i>							
	1.4	1.5	1.4	1.9	1.6	1.7	1.4
TAKINGS FROM ACCOMMODATION (\$'000)							
<i>December quarter 1995</i>							
	2,427	2,160	4,586	15,252	6,838	22,090	1,325
<i>1996—</i>							
October	715	788	1,503	5,022	2,555	7,577	461
November	753	902	1,655	5,221	2,695	7,916	506
December	699	758	1,457	4,699	2,364	7,063	547
<i>December quarter 1996</i>							
	2,166	2,449	4,615	14,941	7,614	22,556	1,514

(a) Coverage breaks in series occurred as from September quarter 1996. See page 2, "Coverage update". (b) The East Coast Tourist Area comprises Glamorgan/Spring Bay (M) and Break O'Day (M).

TABLE 8 — HOTELS, MOTELS AND GUEST HOUSES WITH FACILITIES: STATISTICAL DIVISIONS

Statistical Divisions and selected Statistical Local Areas	Establish- ments	Guest rooms	Bed spaces	Employ- ment (persons)	Room nights occupied				Room occupancy rates (per cent)			
					Oct.	Nov.	Dec.	Dec. qtr	Oct.	Nov.	Dec.	Dec. qtr
					Clarence (C)	5	57	151	100	1,069	1,178	978
Glenorchy (C)	7	168	439	121	3,281	3,272	2,443	8,996	63.0	64.9	46.9	58.2
Hobart (C)												
Inner	6	434	1,056	213	9,232	10,344	7,443	27,019	68.6	79.4	55.3	67.7
Remainder	30	1,174	3,380	1,480	26,344	26,095	23,078	75,517	72.4	74.1	63.4	69.9
Total	36	1,608	4,436	1,693	35,576	36,439	30,521	102,536	71.4	75.5	61.2	69.3
Balance	6	79	224	62	1,087	1,049	855	2,991	44.4	44.3	34.9	41.2
Greater Hobart (SD)	54	1,912	5,250	1,976	41,013	41,938	34,797	117,748	69.2	73.1	58.7	66.9
Glamorgan/Spring Bay (M)	10	331	1,210	205	4,737	5,094	5,027	14,858	46.2	51.3	49.0	48.8
Tasman (M)	6	136	401	86	1,756	1,955	1,480	5,191	41.7	47.9	35.1	41.5
Balance	8	141	331	63	1,055	1,176	1,356	3,587	24.1	27.8	31.0	27.7
Southern (SD)	24	608	1,942	354	7,548	8,225	7,863	23,636	40.0	45.1	41.7	42.3
Break O'Day (M)	6	178	464	106	1,709	1,727	1,444	4,880	31.0	32.3	26.2	29.8
Launceston (C)												
Inner	9	470	1,321	341	9,335	9,668	8,489	27,492	64.1	68.6	58.3	63.6
Parts B & C	24	622	2,038	312	11,151	11,161	9,348	31,660	57.8	59.8	48.5	55.3
Total	33	1,092	3,359	653	20,486	20,829	17,837	59,152	60.5	63.6	52.7	58.9
Northern Midlands (M) — Pts A & B	3	25	67	22	379	408	318	1,105	48.9	54.4	41.0	48.0
West Tamar (M) — Pts A & B	7	124	384	118	1,554	1,506	1,324	4,384	40.4	40.5	34.4	38.4
Balance	9	217	653	491	3,962	4,196	3,770	11,928	58.9	64.5	56.0	59.7
Northern (SD)	58	1,636	4,927	1,390	28,090	28,666	24,693	81,449	55.4	58.4	48.7	54.1
Burnie (C) — Pts A & B	8	236	578	131	2,846	2,503	1,974	7,323	38.9	35.4	27.0	33.7
Central Coast (M) — Pts A & B	5	115	292	85	1,210	1,362	912	3,484	33.9	39.5	25.6	32.9
Circular Head (M)	3	121	324	87	2,043	2,684	1,697	6,424	54.5	73.9	45.2	57.7
Devonport (C)	9	242	665	127	3,281	3,538	2,799	9,618	43.7	48.7	37.3	43.2
Waratah/Wynyard (M) — Pts A & B	7	117	312	74	1,312	1,589	1,266	4,167	36.2	45.3	34.9	38.7
West Coast (M)	11	424	1,214	228	5,200	6,341	5,073	16,614	39.6	49.9	38.6	42.6
Balance	8	193	691	168	3,810	4,103	4,391	12,304	63.7	70.9	73.4	69.3
Mersey-Lyell (SD)	51	1,448	4,076	900	19,702	22,120	18,112	59,934	43.9	50.9	40.3	45.0
Total Tasmania	187	5,604	16,195	4,620	96,353	100,949	85,465	282,767	55.5	60.0	49.2	54.8

## AND SELECTED STATISTICAL LOCAL AREAS, TASMANIA, DECEMBER QUARTER 1996

<i>Guest nights</i>				<i>Guest arrivals</i>				<i>Takings from accommodation (\$'000)</i>			
<i>Oct.</i>	<i>Nov.</i>	<i>Dec.</i>	<i>Dec. qtr</i>	<i>Oct.</i>	<i>Nov.</i>	<i>Dec.</i>	<i>Dec. qtr</i>	<i>Oct.</i>	<i>Nov.</i>	<i>Dec.</i>	<i>Dec. qtr</i>
2,025	2,162	1,903	6,090	1,246	1,208	1,066	3,520	71	77	67	215
5,777	5,802	4,371	15,950	3,030	3,255	2,379	8,664	161	154	126	441
15,116	16,664	12,699	44,479	6,797	7,588	6,373	20,758	689	772	589	2,049
42,078	42,816	40,557	125,451	19,591	18,940	17,491	56,022	2,490	2,447	2,209	7,145
57,194	59,480	53,256	169,930	26,388	26,528	23,864	76,780	3,179	3,218	2,797	9,194
1,947	1,935	1,688	5,570	1,141	1,279	1,111	3,531	59	56	50	166
66,943	69,379	61,218	197,540	31,805	32,270	28,420	92,495	3,470	3,506	3,041	10,016
9,812	10,422	11,073	31,307	7,366	7,746	7,456	22,568	377	423	471	1,271
3,483	3,844	3,113	10,440	3,143	3,522	2,737	9,402	125	140	114	379
2,059	2,323	2,692	7,074	1,391	1,469	1,697	4,557	71	72	86	230
15,354	16,589	16,878	48,821	11,900	12,737	11,890	36,527	573	635	672	1,880
3,311	3,146	2,888	9,345	2,367	2,418	2,193	6,978	84	83	76	242
14,042	15,034	13,781	42,857	7,707	8,172	6,852	22,731	770	806	727	2,303
20,353	19,859	17,684	57,896	11,584	11,998	10,305	33,887	723	736	631	2,090
34,395	34,893	31,465	100,753	19,291	20,170	17,157	56,618	1,493	1,542	1,358	4,393
672	774	607	2,053	265	309	227	801	16	18	12	46
2,642	2,602	2,393	7,637	1,598	1,402	1,424	4,424	80	81	77	238
6,775	6,844	6,465	20,084	3,303	3,288	3,692	10,283	359	396	371	1,126
47,795	48,259	43,818	139,872	26,824	27,587	24,693	79,104	2,031	2,120	1,893	6,045
3,796	3,218	2,956	9,970	2,432	2,101	1,767	6,300	192	156	131	480
1,800	2,132	1,493	5,425	1,226	1,273	896	3,395	61	70	46	177
3,081	3,925	2,575	9,581	2,629	3,200	2,171	8,000	127	173	108	408
4,600	5,316	4,541	14,457	3,368	4,013	3,398	10,779	222	246	193	662
2,548	2,968	2,489	8,005	2,016	2,087	1,744	5,847	69	94	89	252
9,430	11,630	9,026	30,086	6,714	7,759	6,947	21,420	343	424	345	1,113
7,963	8,116	9,512	25,591	5,005	5,168	5,753	15,926	488	492	543	1,524
33,218	37,305	32,592	103,115	23,390	25,601	22,676	71,667	1,503	1,655	1,457	4,615
163,310	171,532	154,506	489,348	93,919	98,195	87,679	279,793	7,577	7,916	7,063	22,556

TABLE 9 — HOLIDAY FLATS, UNITS AND HOUSES BY STATISTICAL DIVISION AND SELECTED STATISTICAL AREAS, TASMANIA (a)

Particulars	Northern (SD)				Total	Mersey-Lyell (SD)	Total Tasmania	East Coast (b)
	Greater Hobart (SD)	Southern (SD)	Greater Launceston and Central North (SSDs)	North Eastern (SSD)				
LETTING ENTITIES, CAPACITY AND EMPLOYMENT								
<i>December quarter 1995</i>								
Letting entities	13	9	11	7	18	14	54	11
Flats, units and houses								
Single bedroom	50	21	93	29	122	42	235	40
Multiple bedroom	182	81	139	72	211	121	595	96
<i>Total flats, units and houses</i>	<i>232</i>	<i>102</i>	<i>232</i>	<i>101</i>	<i>333</i>	<i>163</i>	<i>830</i>	<i>136</i>
Bed spaces	1,039	517	899	472	1,371	733	3,660	630
Employment (persons)	78	47	157	30	187	55	367	50
<i>December quarter 1996</i>								
Letting entities	13	11	11	7	18	15	57	13
Flats, units and houses								
Single bedroom	50	21	89	28	117	52	240	39
Multiple bedroom	184	94	142	73	215	128	621	111
<i>Total flats, units and houses</i>	<i>234</i>	<i>115</i>	<i>231</i>	<i>101</i>	<i>332</i>	<i>180</i>	<i>861</i>	<i>150</i>
Bed spaces	1,038	591	892	474	1,366	815	3,810	718
Employment (persons)	72	56	130	25	155	58	341	57
UNIT NIGHTS OCCUPIED								
<i>December quarter 1995</i>	<i>14,140</i>	<i>5,318</i>	<i>10,962</i>	<i>2,562</i>	<i>13,524</i>	<i>7,369</i>	<i>40,351</i>	<i>4,942</i>
<i>1996—</i>								
October	5,085	1,870	3,388	803	4,191	2,721	13,867	1,887
November	5,266	1,983	3,440	899	4,339	2,936	14,524	1,953
December	4,595	2,013	3,198	957	4,155	2,781	13,544	2,055
<i>December quarter 1996</i>	<i>14,946</i>	<i>5,866</i>	<i>10,026</i>	<i>2,659</i>	<i>12,685</i>	<i>8,438</i>	<i>41,935</i>	<i>5,895</i>
UNIT OCCUPANCY RATES (per cent)								
<i>December quarter 1995</i>	<i>66.2</i>	<i>56.7</i>	<i>51.4</i>	<i>27.6</i>	<i>44.1</i>	<i>49.1</i>	<i>52.8</i>	<i>39.5</i>
<i>1996—</i>								
October	70.1	52.5	47.3	25.6	40.7	48.8	52.0	40.6
November	75.0	57.5	49.6	29.7	43.6	54.4	56.2	43.4
December	63.3	56.5	44.7	30.6	40.4	49.8	50.7	44.2
<i>December quarter 1996</i>	<i>69.4</i>	<i>55.4</i>	<i>47.2</i>	<i>28.6</i>	<i>41.5</i>	<i>51.0</i>	<i>52.9</i>	<i>42.7</i>
UNIT LETTINGS								
<i>December quarter 1995</i>	<i>5,534</i>	<i>3,400</i>	<i>5,303</i>	<i>1,315</i>	<i>6,618</i>	<i>4,179</i>	<i>19,731</i>	<i>2,781</i>
<i>1996—</i>								
October	1,901	1,329	1,882	363	2,245	1,563	7,038	1,144
November	2,037	1,350	1,853	480	2,333	1,674	7,394	1,188
December	1,661	1,228	1,703	431	2,134	1,495	6,518	1,096
<i>December quarter 1996</i>	<i>5,599</i>	<i>3,907</i>	<i>5,438</i>	<i>1,274</i>	<i>6,712</i>	<i>4,732</i>	<i>20,950</i>	<i>3,428</i>
AVERAGE LENGTH OF STAY (days)								
<i>December quarter 1995</i>	<i>2.6</i>	<i>1.6</i>	<i>2.1</i>	<i>1.9</i>	<i>2.0</i>	<i>1.8</i>	<i>2.0</i>	<i>1.8</i>
<i>1996—</i>								
October	2.7	1.4	1.8	2.2	1.9	1.7	2.0	1.6
November	2.6	1.5	1.9	1.9	1.9	1.8	2.0	1.6
December	2.8	1.6	1.9	2.2	1.9	1.9	2.1	1.9
<i>December quarter 1996</i>	<i>2.7</i>	<i>1.5</i>	<i>1.8</i>	<i>2.1</i>	<i>1.9</i>	<i>1.8</i>	<i>2.0</i>	<i>1.7</i>
TAKINGS FROM ACCOMMODATION (\$'000)								
<i>December quarter 1995</i>	<i>1,026</i>	<i>434</i>	<i>924</i>	<i>128</i>	<i>1,052</i>	<i>445</i>	<i>2,958</i>	<i>359</i>
<i>1996—</i>								
October	353	133	276	39	316	151	953	118
November	367	139	283	49	331	183	1,020	124
December	349	175	264	50	314	179	1,017	160
<i>December quarter 1996</i>	<i>1,069</i>	<i>447</i>	<i>823</i>	<i>138</i>	<i>961</i>	<i>513</i>	<i>2,990</i>	<i>402</i>

(a) Coverage breaks in series occurred as from September quarter 1996. See page 2, "Coverage update". (b) The East Coast Tourist Area comprises Glamorgan/Spring Bay (M) and Break O' Day (M).

TABLE 10 — CARAVAN PARKS BY STATISTICAL DIVISION AND SELECTED STATISTICAL AREAS, TASMANIA

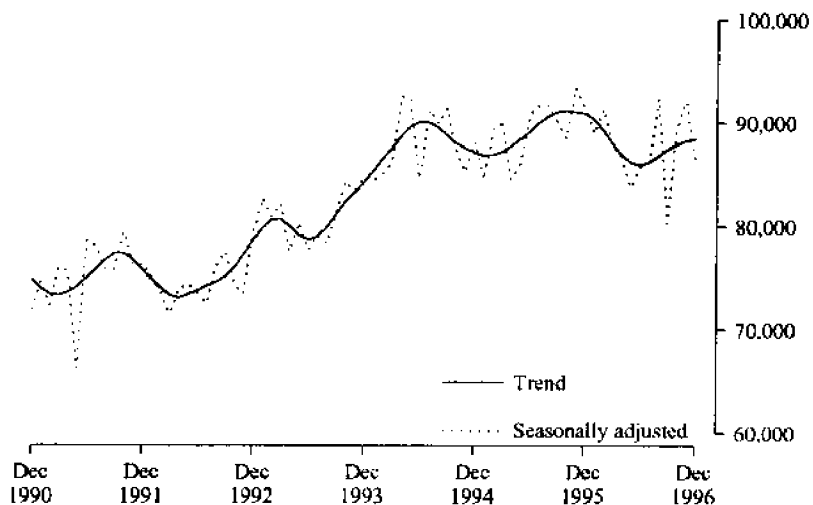
Particulars	Northern (SD)					Mersey-Lyell (SD)	Total Tasmania	East Coast (a)
	Greater Hobart (SD)	Southern (SD)	Greater Launceston and Central North (SSDs)	North Eastern (SSD)	Total			
<b>ESTABLISHMENTS, CAPACITY AND EMPLOYMENT</b>								
<i>December quarter 1995—</i>								
Establishments	7	18	12	8	20	27	72	11
Capacity								
On-site vans	69	67	56	25	81	163	380	55
Other powered sites	242	803	488	503	991	1,449	3,485	660
Unpowered sites	267	359	317	556	873	611	2,110	505
Cabins, flats, etc.	65	138	73	20	93	169	465	79
<i>Total capacity</i>	<i>643</i>	<i>1,367</i>	<i>934</i>	<i>1,104</i>	<i>2,038</i>	<i>2,392</i>	<i>6,440</i>	<i>1,299</i>
Sites occupied by long-term guests	67	27	80	10	90	235	419	32
Other sites permanently reserved	11	348	102	299	401	331	1,091	367
Employment (persons)	30	84	42	22	64	93	271	53
<i>December quarter 1996—</i>								
Establishments	7	18	12	8	20	28	73	11
Capacity								
On-site vans	66	64	51	21	72	163	365	51
Other powered sites	248	803	483	533	1,016	1,466	3,533	663
Unpowered sites	259	363	312	538	850	630	2,102	511
Cabins, flats, etc.	67	140	80	20	100	193	500	87
<i>Total capacity</i>	<i>640</i>	<i>1,370</i>	<i>926</i>	<i>1,112</i>	<i>2,038</i>	<i>2,452</i>	<i>6,500</i>	<i>1,312</i>
Sites occupied by long-term guests	61	16	76	12	88	252	417	21
Other sites permanently reserved	6	350	102	308	410	341	1,107	373
Employment (persons)	40	92	39	37	76	97	305	69
<b>SITE NIGHTS OCCUPIED</b>								
<i>December quarter 1995</i>	<i>18,553</i>	<i>46,286</i>	<i>26,060</i>	<i>31,466</i>	<i>57,526</i>	<i>74,235</i>	<i>196,600</i>	<i>43,033</i>
<i>1996—</i>								
October	5,488	14,255	8,557	10,351	18,908	23,326	61,977	13,947
November	5,234	14,811	9,098	10,268	19,366	23,561	62,972	14,068
December	5,980	17,480	9,543	12,011	21,554	27,840	72,854	16,128
<i>December quarter 1996</i>	<i>16,702</i>	<i>46,546</i>	<i>27,198</i>	<i>32,630</i>	<i>59,828</i>	<i>74,727</i>	<i>197,803</i>	<i>44,143</i>
<b>SITE OCCUPANCY RATES (per cent)</b>								
<i>December quarter 1995</i>	<i>31.4</i>	<i>36.8</i>	<i>30.3</i>	<i>31.0</i>	<i>30.7</i>	<i>33.7</i>	<i>33.2</i>	<i>36.0</i>
<i>1996—</i>								
October	27.7	33.6	29.8	30.0	29.9	30.7	30.8	34.3
November	27.3	36.0	32.8	30.8	31.7	32.0	32.3	35.7
December	30.1	41.2	33.2	34.8	34.1	36.6	36.2	39.7
<i>December quarter 1996</i>	<i>28.4</i>	<i>36.9</i>	<i>31.9</i>	<i>31.9</i>	<i>31.9</i>	<i>33.1</i>	<i>33.1</i>	<i>36.6</i>
<b>TAKINGS FROM ACCOMMODATION (\$'000)</b>								
<i>December quarter 1995</i>	<i>357</i>	<i>516</i>	<i>320</i>	<i>108</i>	<i>428</i>	<i>621</i>	<i>1,923</i>	<i>389</i>
<i>1996—</i>								
October	109	170	110	27	137	180	596	123
November	117	151	118	37	155	222	644	113
December	122	192	121	56	177	251	742	139
<i>December quarter 1996</i>	<i>347</i>	<i>513</i>	<i>349</i>	<i>120</i>	<i>469</i>	<i>654</i>	<i>1,983</i>	<i>376</i>

(a) The East Coast Tourist Area comprises Glamorgan/Spring Bay (M) and Break O' Day (M).

**TABLE 11—HOTEL & MOTEL ETC. ROOM NIGHTS, HOLIDAY UNIT NIGHTS AND CARAVAN PARK SITE NIGHTS: SEASONALLY ADJUSTED AND TREND ESTIMATES**

Period	Hotel, motel etc. with facilities, room nights		Holiday unit nights		Caravan park site nights	
	Seasonally adjusted	Trend	Seasonally adjusted	Trend	Seasonally adjusted	Trend
1994—December	88,136	87,108	13,433	14,000	65,194	65,284
1995— January	84,462	86,826	14,001	14,297	63,575	65,044
February	89,522	86,896	14,704	14,601	65,183	65,070
March	89,885	87,220	14,828	14,780	64,164	65,209
April	84,545	87,811	13,749	12,543	67,308	65,390
May	85,913	88,469	11,809	12,428	65,379	65,540
June	90,857	89,209	11,956	12,252	65,727	65,523
July	91,724	90,010	12,144	12,158	65,084	65,398
August	91,661	90,657	11,760	12,233	64,125	65,309
September	90,106	91,103	12,918	12,446	66,559	65,272
October	88,438	91,208	12,224	12,641	64,974	65,396
November	93,421	91,108	13,331	12,773	65,367	65,686
December	91,340	90,882	13,329	12,820	66,831	65,882
1996— January	88,997	90,353	12,240	12,818	64,854	65,931
February	91,402	89,251	12,353	12,771	65,465	65,858
March	87,965	88,025	12,136	12,681	69,259	65,832
April	86,789	86,929	14,486	12,539	63,649	65,987
May	83,759	86,149	11,651	12,338	63,992	66,280
June	85,705	85,934	11,829	12,154	68,240	66,706
July	86,142	86,208	12,153	12,066	67,597	67,105
August	92,416	86,824	11,762	12,157	68,379	67,343
September	80,295	87,452	12,144	12,444	67,006	67,391
October	89,296	87,924	12,999	12,835	66,373	67,199
November	92,164	88,306	13,759	13,250	67,509	66,920
December	86,152	88,457	13,628	13,571	66,060	66,500

**HOTEL/MOTEL ROOM NIGHTS**



**HOLIDAY UNIT NIGHTS**

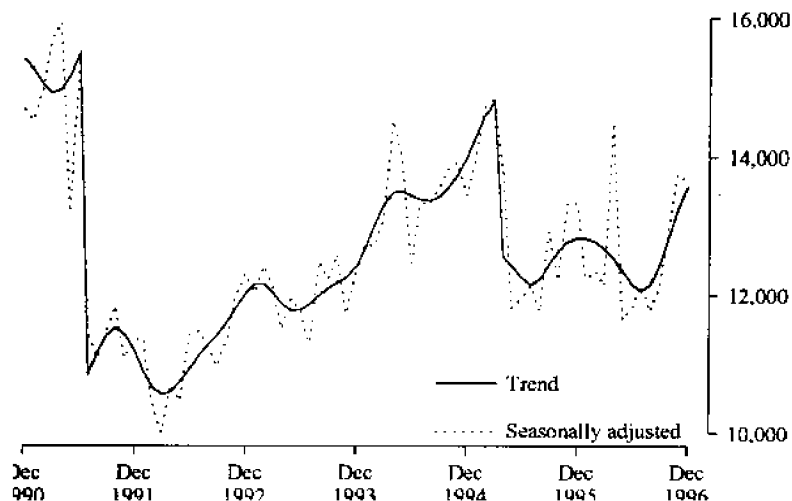


TABLE 12 — VISITOR HOSTELS BY STATISTICAL DIVISION, TASMANIA (a)

Particulars	Greater Hobart (SD)	Southern (SD)	Northern (SD)	Mersey-Lyell (SD)	Total Tasmania
ESTABLISHMENTS, CAPACITY AND EMPLOYMENT					
<i>December quarter 1995—</i>					
Establishments	6	17	10	8	41
Bed spaces	322	548	310	539	1,719
Employment (persons)	31	38	18	23	110
<i>December quarter 1996—</i>					
Establishments	8	17	13	9	47
Bed spaces	475	562	427	656	2,120
Employment (persons)	53	33	30	27	143
GUEST NIGHTS					
<i>December quarter 1995</i>	<i>10,529</i>	<i>8,888</i>	<i>2,871</i>	<i>7,394</i>	<i>29,682</i>
<i>1996—</i>					
October	3,407	2,172	1,494	1,945	9,018
November	3,461	2,992	964	2,607	10,024
December	5,241	4,217	1,134	4,178	14,770
<i>December quarter 1996</i>	<i>12,109</i>	<i>9,381</i>	<i>3,592</i>	<i>8,730</i>	<i>33,812</i>
BED OCCUPANCY RATES (per cent)					
<i>December quarter 1995</i>	<i>35.5</i>	<i>17.6</i>	<i>10.1</i>	<i>14.9</i>	<i>18.8</i>
<i>1996—</i>					
October	23.1	13.2	11.3	9.6	13.9
November	24.3	18.8	7.5	13.2	16.0
December	35.6	25.4	8.6	20.5	22.8
<i>December quarter 1996</i>	<i>27.7</i>	<i>19.2</i>	<i>9.1</i>	<i>14.5</i>	<i>17.6</i>
GUEST ARRIVALS					
<i>December quarter 1995</i>	<i>5,635</i>	<i>5,865</i>	<i>2,134</i>	<i>5,419</i>	<i>19,053</i>
<i>1996—</i>					
October	1,724	1,553	916	1,305	5,498
November	2,013	2,190	758	2,049	7,010
December	2,876	2,743	922	3,247	9,788
<i>December quarter 1996</i>	<i>6,613</i>	<i>6,486</i>	<i>2,596</i>	<i>6,601</i>	<i>22,296</i>
AVERAGE LENGTH OF STAY (days)					
<i>December quarter 1995</i>	<i>1.9</i>	<i>1.5</i>	<i>1.3</i>	<i>1.4</i>	<i>1.6</i>
<i>1996—</i>					
October	2.0	1.4	1.6	1.5	1.6
November	1.7	1.4	1.3	1.3	1.4
December	1.8	1.5	1.2	1.3	1.5
<i>December quarter 1996</i>	<i>1.8</i>	<i>1.4</i>	<i>1.4</i>	<i>1.3</i>	<i>1.5</i>
TAKINGS FROM ACCOMMODATION (\$'000)					
<i>December quarter 1995</i>	<i>132</i>	<i>115</i>	<i>27</i>	<i>87</i>	<i>361</i>
<i>1996—</i>					
October	45	24	16	23	108
November	43	34	10	31	118
December	64	52	12	55	183
<i>December quarter 1996</i>	<i>152</i>	<i>109</i>	<i>38</i>	<i>109</i>	<i>409</i>

(a) Coverage breaks in series occurred as from September quarter 1996. See page 2, "Coverage update".

TABLE 13—PASSENGER ARRIVALS AND DEPARTURES, TASMANIA,  
INTERSTATE AND INTERNATIONAL (a) (d)  
(Department of Tourism)

Period	Arrivals				Departures total (h)	Cruise ships (c)	
	By air— interstate	By air— international	By sea	Total		Arrivals	Departures
1989	449,481	8,489	118,646	576,616	591,152	4,149	4,149
1990	555,631	8,629	120,004	684,264	679,833	3,255	3,255
1991	625,366	5,897	131,375	762,638	764,731	6,720	6,663
1992	652,092	4,428	114,969	771,489	761,109	4,608	4,608
1993	694,244	5,144	115,381	814,769	814,835	2,033	2,033
1994	745,508	4,166	128,644	878,318	880,936	6,592	6,592
1995	811,784	3,982	116,869	932,635	931,278	6,199	6,199
1996	815,594	2,999	115,486	934,439	960,569	5,286	5,286
1994— December	78,749	419	13,433	92,601	79,187	-	-
1995— January	80,818	318	12,430	93,566	115,126	1,368	1,368
February	78,700	269	11,704	90,673	81,727	1,772	1,772
March	68,790	351	13,087	82,228	86,348	659	659
April	66,840	423	9,584	76,847	83,918	-	-
May	53,364	277	8,368	62,009	70,563	-	-
June	57,146	211	7,678	65,035	62,555	-	-
July	56,761	294	5,793	62,848	59,312	-	-
August	58,124	240	4,027	62,391	65,381	-	-
September	73,105	407	11,150	84,662	72,559	-	-
October	65,079	346	10,889	76,314	75,628	-	-
November	68,990	394	10,187	79,571	77,855	810	810
December	84,067	452	11,972	96,491	80,306	1,590	1,590
1996— January	83,246	384	12,756	96,386	114,160	2,806	2,806
February	74,239	377	10,926	85,542	79,106	1,630	1,630
March	71,858	503	10,998	83,359	89,056	-	-
April	72,146	355	9,652	82,153	84,390	-	-
May	60,990	182	4,861	66,033	78,425	-	-
June	63,351	120	5,417	68,888	66,010	-	-
July	56,537	-	7,550	64,087	68,288	-	-
August	56,695	-	7,952	64,647	66,400	-	-
September	74,597	-	11,257	85,854	75,490	-	-
October	68,956	352	10,073	79,381	79,774	-	-
November	68,037	431	11,341	79,809	78,803	-	-
December	65,302	295	12,703	78,300	80,667	850	850

(a) The following persons are not included in these statistics: passengers under three years of age accompanied by an adult; passengers travelling on chartered flights with minor carriers; passengers travelling on private or VIP flights.

(b) The proportion of departing passengers who were visitors was shown to be about 58% in the 1981 Tasmanian Visitor Survey (TVS), around 55% in the 1984 TVS, about 53% in the 1986 TVS, nearly 60% in the 1988 TVS, close to 65% in the 1990 TVS, almost 58% in the 1991 TVS, almost 55% in the 1992 TVS, just over 58% in the 1993 TVS and almost 60% in the 1994 TVS.

(c) Cruise ship statistics were not collected before November 1986 and are not included in Total Arrivals and Total Departures.

(d) The domestic airline pilots dispute commenced on 18 August 1989 with the pilots working restricted hours (9 a.m. to 5 p.m.). The pilots were suspended on 23 August 1989.

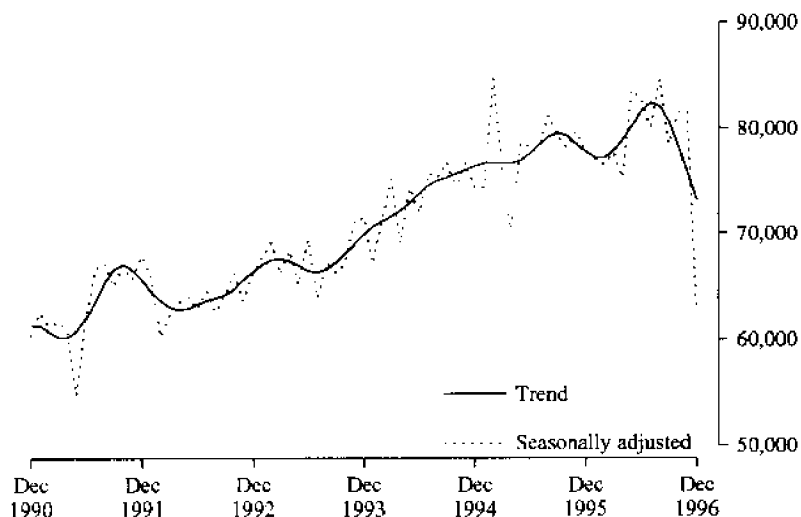


**TABLE 14—TOTAL PASSENGER ARRIVALS BY AIR AND SEA INTO TASMANIA:  
SEASONALLY ADJUSTED AND TREND SERIES (a)**

<i>Period</i>	<i>Original</i>	<i>Seasonally adjusted (a)</i>	<i>Trend</i>
<i>Dec. 1990</i>	73,421	60,378	61,354
<i>1991</i>	83,162	67,871	65,583
<i>1992</i>	82,262	66,172	66,397
<i>1993</i>	89,795	71,556	69,930
<i>1994</i>	92,601	74,350	76,496
<i>1995</i>	96,491	77,749	77,754
<i>1996</i>	78,300	62,551	73,150
<i>1994—December</i>	92,601	74,350	76,496
<i>1995—January</i>	93,566	74,470	76,709
<i>February</i>	90,673	84,724	76,756
<i>March</i>	82,228	76,099	76,695
<i>April</i>	76,847	70,362	76,747
<i>May</i>	62,009	78,554	77,022
<i>June</i>	65,035	78,183	77,636
<i>July</i>	62,848	78,173	78,455
<i>August</i>	62,391	81,276	79,256
<i>September</i>	84,662	79,187	79,598
<i>October</i>	76,314	78,183	79,265
<i>November</i>	79,571	79,734	78,526
<i>December</i>	96,491	77,749	77,754
<i>1996—January</i>	96,386	77,172	77,223
<i>February</i>	85,542	76,566	77,180
<i>March</i>	83,359	77,720	77,822
<i>April</i>	82,153	75,312	78,931
<i>May</i>	66,033	83,587	80,200
<i>June</i>	68,888	82,722	81,612
<i>July</i>	64,087	80,146	82,397
<i>August</i>	64,647	84,612	82,072
<i>September</i>	85,854	78,478	80,645
<i>October</i>	79,381	81,475	78,455
<i>November</i>	79,809	81,484	75,783
<i>December</i>	78,300	62,551	73,150

(a) There is an annual recalculation of seasonal adjustment factors to include the most recent year's arrivals. This occurs at the end of each financial year and may cause revisions to previously published seasonally-adjusted and trend figures, as can be seen in Table 14. A full printout of seasonally-adjusted and trend series figures dating back to 1971 can be obtained through the publication officer for this publication (Eddie Oakford).

**TOTAL ARRIVALS IN TASMANIA**



Source: Dept. of Tourism, Sport & Recreation

# EXPLANATORY NOTES

.....

## INTRODUCTION

**1** This publication contains data for Tasmania from a quarterly survey of tourist accommodation establishments.

## SCOPE

**2** Tourist accommodation establishments currently included in the survey comprise two groups:

- Establishments which provide predominantly short-term accommodation (i.e. for periods of less than 2 months) to the general public. These include:
  - *Hotels, motels and guest houses, with facilities* being hotels licensed to operate a public bar and motels, private hotels and guest houses all of which provide a bath (or shower) and toilet in most guest rooms and have breakfast available for guests. NOTE: From December quarter 1993, hotel, motel and guest house establishments with fewer than five rooms have been formally excluded from the scope of this statistical collection.
  - *Holiday flats, units and houses* (excluding establishments predominantly operated on a time share basis) which are operated by owners, managers or real estate agents who have sole letting rights to at least five flats, units or houses for short-term letting. They are mainly self-contained in terms of cooking, bath (or shower) and toilet facilities and do not have breakfast available for guests. Data for holiday flats, units and houses include short-term owner occupation as well as paying guest occupation.
  - *Visitor hostels* which provide accommodation to visitors on a bed basis (rather than by the room). This category does not include establishments providing charity type accommodation (e.g. Salvation Army hostels) nor hotels, motels and guest houses without in-room facilities which provide accommodation on a per room basis.
  - *Caravan parks* which provide either predominantly short-term (i.e. for periods of less than 2 months) or predominantly long-term (i.e. for periods of 2 months or more) accommodation to the general public and which provide powered sites for caravans and toilet, shower and laundry facilities for guests.

**3** Data collected and published for each type of establishment (other than holiday flats, units and houses) include both long-term and short-term guests at these establishments.

**4** Establishments which provide more than one type of accommodation (e.g. a motel with attached caravan park) are treated as two or more separate establishments. However, self-contained units, flats, cabins, etc. attached to hotels, motels or to caravan parks are included in the capacity for those establishments and not treated as separate holiday flat, unit or house establishments.

## AUSTRALIAN STANDARD GEOGRAPHICAL CLASSIFICATION

**5** Statistics presented in this publication have been classified according to the Australian Standard Geographical Classification (ASGC), Edition 1996. This classification incorporates a number of hierarchic structures of geographic areas. The appropriate spatial units of the main structure of the ASGC used in this publication are defined as follows.

.....

# EXPLANATORY NOTES

## AUSTRALIAN STANDARD GEOGRAPHICAL CLASSIFICATION continued

STATISTICAL LOCAL AREAS (SLAs) are legal Local Government Areas or parts thereof, which serve as the smallest type of spatial unit considered appropriate for the presentation of statistics and which add, without gaps or overlaps, to;

STATISTICAL SUBDIVISIONS (SSDs) which in turn represent another, higher hierarchic level and add, without gaps or overlaps, to;

STATISTICAL DIVISIONS (SDs) which in turn add, without gaps or overlaps, to:

*Total Tasmania.*

For more detailed information, refer to the ASGC (1216.0).

## UNPUBLISHED STATISTICS

**6** The ABS may make available on request certain unpublished tourist accommodation statistics. A charge may be made for this information.

## RELATED PUBLICATIONS

**7** Publications for Australia, and each State and Territory, are released by the respective offices of the ABS. Tourist accommodation statistics for past quarters are available on request. Other ABS publications which may be of interest include:

- *Directory of Tourism Statistics* (1130.0) (irregular: first and latest issue; 1991)
- *Overseas Arrivals and Departures, Australia* (3401.0) (monthly)
- *Tourism Indicators, Australia* (8634.0) (quarterly)
- *Tourism Accommodation, Australia* (8635.0) (quarterly)

**8** Current publications produced by the ABS are listed in the *Catalogue of Publications and Products* (1101.0). The ABS also issues the *Release Advice* (1105.0) on Tuesdays and Fridays which lists publications to be released in the next few days. Both the *Catalogue* and *Release Advice* are available from any ABS office.

## SYMBOLS AND OTHER USAGES

n.a. not available

n.p. not available for publication but included in totals where applicable

r revised

.. not applicable

— nil or rounded to zero

— break in continuity of the series (where drawn across a column between two consecutive figures)

(C) City

(M) Municipality

**9** Where figures have been rounded, discrepancies may occur between totals and the sums of the component items.

# GLOSSARY

<b>Average length of stay</b>	<p>Average length of stay is expressed in numbers of days and calculated:</p> <ul style="list-style-type: none"> <li>▪ for hotels, motels and guest houses, by dividing <i>Guest nights</i> by <i>Guest arrivals</i> and</li> <li>▪ for holiday flats, units and houses, by dividing <i>Unit nights occupied</i> by <i>Unit lettings</i>.</li> </ul>
<b>Bed spaces</b>	Three-quarter beds are counted as one bed space; double beds as two bed spaces. Cots are excluded.
<b>Capacity</b>	Capacity in terms of <i>Guest rooms</i> , <i>Bed spaces</i> , <i>Holiday units</i> or <i>Caravan park sites</i> , etc. is the maximum number available to accommodate paying guests during the survey period. Capacity closed temporarily for seasonal reasons is included.
<b>Caravan park capacity</b>	The total number of <i>On-site vans</i> , <i>Other powered sites</i> , <i>Unpowered sites</i> and <i>Cabins</i> , etc.
<b>Employment</b>	The number of persons working at accommodation establishments at the end of the survey period (including working proprietors and those working on other than accommodation activities).
<b>Establishments</b>	For hotels, motels and guest houses, caravan parks and visitor hostels, the number of establishments within the scope of the survey which operated for any part of the survey period, or which closed temporarily for the quarter for seasonal reasons.
<b>Guest arrivals</b>	The total number of paying guests counted only on the first night they stayed at the accommodation establishment.
<b>Letting entities</b>	For holiday flats, units and houses, the number of owners, managers or real estate agents within the scope of the survey who operated for any part of the survey period.
<b>Occupancy</b>	<p>Occupancy in terms of <i>Room nights</i>, <i>Unit nights</i> or <i>Site nights occupied</i> refers to the total number of nights each guest room, holiday unit or caravan park site, etc. was occupied during the survey period. NOTE: From September quarter 1992, caravan park sites, etc. permanently reserved for 2 months or more at the end of the survey period but only casually occupied by their tenants have been recorded continuously as <i>Site nights occupied</i> irrespective of whether the tenants of individual sites were in residence on any particular night.</p> <p>Occupancy in terms of <i>Guest nights</i> refers to the total number of nights each paying guest stayed during the survey period.</p>
<b>Occupancy rates</b>	<p><i>Occupancy rates</i> represent occupancy expressed as a percentage of total capacity available during the survey period, e.g.</p>

$$\text{Room occupancy rate (\%)} \text{ for the period} = \frac{\text{Room nights occupied}}{(\text{Guest rooms}) \times (\text{No. of days in the period})} \times 100$$

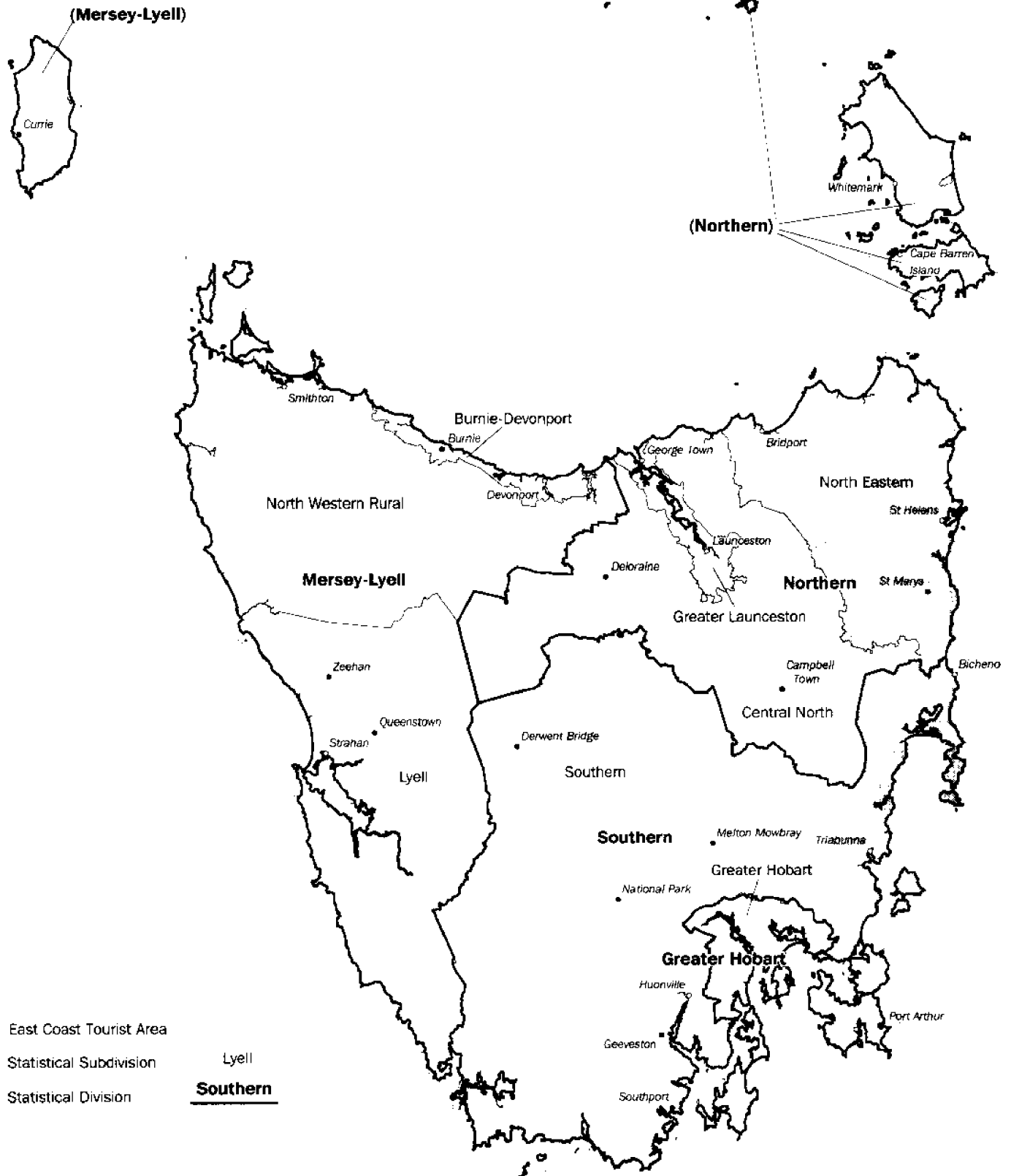
providing that, for establishments closing (other than for seasonal reasons) or opening during the survey period, the denominator of the above expression includes only operating periods.

## GLOSSARY

.....

- Other sites permanently reserved** The total number of powered and unpowered sites, on-site vans and cabins, etc. continuously let for 2 months or more by the end of the survey period to tenants who occupy the sites only on a casual or sporadic basis. Separate data for this item are available only from September quarter 1992.
- Room nights available** The number of guest rooms available multiplied by the number of days for which they were available during the survey period. For establishments closing (other than for seasonal reasons) or opening during the survey period, operating periods only are included.
- Sites occupied by long-term guests** The total number of sites, etc. occupied at the end of the survey period by guests who have stayed continuously for 2 months or more.
- Star grading** The grading of hotels and motels with facilities based on the classification system used by members of the Australian Automobile Association (AAA). The gradings are allocated according to a points system based on the amenities and facilities available to guests. Details of the grading scheme are contained in the RACV-RAASA members' publication *Accommodation Australia*, or the individual tour guides produced by members of the AAA. For the purpose of classifying establishments to a star grading in this publication, 'half' star gradings are ignored (e.g. a two and a half star grading has been shown as two star).
- Takings from accommodation** Revenue received from the provision of accommodation. Takings from meals are excluded. Takings from accommodation for each month generally represent the takings received during that month. Where payments are received in advance of, or after, the provision of accommodation to guests, the monthly figure for takings from accommodation may not necessarily bear a direct relationship to the number of guests accommodated during the month. Rental and storage fees paid to caravan parks for the keeping of private vans in parks are included in the takings of the month they are received.
- Unit lettings** The total number of times a holiday flat, unit or house was occupied by a new tenant, counted only on the first night it was occupied by the new tenant.

# Statistical Divisions and Statistical Subdivisions, Tasmania, 1996







## FOR MORE INFORMATION

The ABS publishes a wide range of information on Australia's economic and social conditions. A catalogue of publications and products is available from any of our offices (see below).

### INFORMATION CONSULTANCY SERVICES

Information tailored to special needs of clients can be obtained from the Information Consultancy Service available at ABS Offices (see below).

### ABS PRODUCTS

A large number of ABS products is available from the ABS Bookshops (see below). The ABS also provides a subscription service – you can telephone the ABS Subscription Service Australia wide toll free on 1800 0206 08.

### ELECTRONIC SERVICES

A large range of data is available via on-line services, diskette, magnetic tape, tape cartridge and CD ROM. For more details about our electronic data services, contact any ABS office (see below) or email us at:

X.400 (C:Australia,PUB:Telememo,O:ABS,FN:STAT,SN:INFO)  
Internet Stat.info@abs.telememo.au  
Keylink STAT.INFO/ABS

You can visit us on the Internet at: <http://www.abs.gov.au>

### GENERAL SALES AND INQUIRIES

\* Sydney 02 9268 4611 \* Adelaide 08 8237 7100  
\* Melbourne 03 9615 7755 \* Hobart 03 6222 5800  
\* Brisbane 07 3222 6351 \* Darwin 08 8943 2111  
\* Perth 09 360 5140 \* Canberra 06 252 6627

■ Information Services, ABS  
PO Box 10, Belconnen ACT 2616



2863560012962

ISSN 0312-6900

RRP \$15.00

© Commonwealth of Australia 1997

Produced by the Australian Government Publishing Service